

Agentic AI for Healthcare

*Transforming Patient Care and Clinical Operations through **Cognitive Automation** and **Secure AI Systems***



Healthcare is entering an era where intelligent automation can bridge the gap between medical expertise, patient data, and actionable insight. At **Sukra Infotek**, we bring together deep healthcare IT experience, cybersecurity excellence, and agentic AI innovation to deliver secure, explainable, and high-impact AI solutions.

Building upon our extensive work in oncology (OncoProAI) and regulated software environments, we design cognitive systems that **assist clinicians, enhance patient experience, and improve operational efficiency** without compromising compliance or trust.

Enabling **Intelligent, Secure, and Scalable** Clinical Workflows

Our Core Competence



Clinical Workflow Intelligence

AI agents that automate triage, transcription, and summarization of patient encounters — reducing clinician documentation burden.



Decision Support Systems

Context-aware reasoning engines providing evidence-based treatment insights and summarizing multi-year EHR data in one intelligent view.



Secure AI Infrastructure

HIPAA-compliant system design integrating strong data encryption, user access controls, and continuous threat monitoring based on Sukra's cybersecurity expertise.



Operational Optimization

Agentic automation of scheduling, inventory, and billing workflows improving hospital throughput and administrative efficiency.

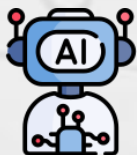


Regulatory and Quality Alignment

Systems built with traceable audit trails, explainability modules, and adherence to clinical governance standards.

From content generation to Autonomous healthcare intelligence

Agentic AI



- Plans & coordinates tasks
- Automates clinical workflows
- Generates actionable insights

Vs

Cognitive AI



- Understands documents & context
- Extracts structured insights
- Performs reasoning

Vs

Generative AI



- Creates text & images
- Assists users
- Works only when prompted

Agentic AI = Generative AI + Cognitive Intelligence + Automation

Application Areas

Tele-Oncology and Remote Consults	Intelligent agents supporting transcription, summarization, and follow-up recommendations for virtual consultations.
Hospital Operations	Predictive workload balancing, patient flow optimization, and autonomous task assignment across departments.
Clinical Documentation	AI-assisted transcription and semantic structuring of patient narratives for faster, error-free data capture.
Population Health Analytics	AI agents aggregating multi-source data for public health insights and clinical research enablement.
Healthcare Compliance and Security Monitoring	Continuous AI-driven surveillance for anomaly detection, data integrity, and regulatory reporting.
Diagnostic Intelligence	AI-assisted image and signal analysis (radiology, pathology, ECG) with contextual decision reasoning for early disease detection.
Patient Engagement & Virtual Care	Conversational agents for pre-visit triage, follow-up reminders, and personalized wellness coaching.
Supply Chain & Inventory Optimization	Predictive restocking, expiry monitoring, and vendor coordination for critical medical supplies.
Operational Asset Management	IoT-integrated agents tracking utilization and maintenance schedules for biomedical equipment.
Clinical Trial & Research Automation	AI agents managing data curation, cohort selection, and protocol adherence for faster study execution.
Care Quality & Outcome Analytics	Continuous monitoring of clinical outcomes, readmission trends, and physician performance metrics for quality improvement.
Emergency Response & Command Systems	Real-time coordination of ambulances, triage teams, and bed allocation using agentic workflows.

Innovation & R&D – Agenetic AI

Jointly powered by



Agentic AI Innovation Roadmap – Healthcare

→ **Surrogate AI for Clinical Decision & Risk Models**

AI models that approximate complex clinical scoring systems, treatment pathways, triage rules, and risk stratification models — enabling instant decision support for critical care, oncology, cardiology, and emergency medicine.

→ **Agentic AI for Autonomous Clinical & Administrative Workflows**

AI agents that read medical records, summarize histories, validate clinical rules, prepare discharge summaries, coordinate appointments, update HIS/EMR, and independently execute multi-step hospital workflows.

→ **Predictive Intelligence for Patient Flow, Disease Progression & Operational Risk**

Self-learning agents that forecast bed occupancy, ICU load, readmission likelihood, deterioration risk, emergency surge patterns, and operational bottlenecks across hospital departments.

→ **Digital Twin Models for Hospitals, Departments & Care Pathways**

Live digital replicas of OR utilization, outpatient load, pharmacy stock, ICU capacity, lab turnaround time, and patient journeys — enabling real-time optimization and resource planning.

→ **Autonomous Compliance, Audit & Quality Operations**

AI-enabled governance that monitors clinical documentation quality, flags regulatory non-compliance, ensures NABH/JCI readiness, validates protocols, checks medication safety, and automatically prepares audit-ready reports.

Our roadmap includes AI-driven clinical automation, real-time patient intelligence, autonomous hospital operations, and self-learning decision agents.

Why
Choose
Sukra
Infotek

Proven Healthcare AI Experience

Our OncoProAI platform integrates agentic reasoning to condense longitudinal oncology records into actionable summaries for oncologists.

Strong Technical Backbone

Multidisciplinary teams with expertise across bioinformatics, AI/ML, cybersecurity, and enterprise system architecture.

Collaborative Ecosystem

Strategic partnerships with **Atlas IntelliTek** (USA) and domain experts enabling scalable agentic AI deployment across care settings.

Data Security & Compliance First

Architecture compliant with HIPAA, GDPR, and ISO 27001 ensuring end-to-end patient data protection.

Scalable Resource Pool

Through Sukra's collaboration network, access to healthcare data scientists, software engineers, and compliance specialists is never a constraint.

The Sukra Advantage

Domain-Driven AI Design	Agentic frameworks built on real-world healthcare process knowledge, not generic automation templates.
Cybersecure by Architecture	Integrated vulnerability assessment, access control, and encryption built into every deployment.
Rapid Proof-of-Value	Short 4–6 week pilots showcasing clinical productivity gains and measurable cost savings before scale-up.
Scalable and Interoperable	HL7/FHIR compatible systems easily integrated into existing HIS, LIS, or EMR platforms.
Startup Agility with Enterprise Strength	Sukra’s lean innovation model backed by deep collaborations ensures both speed and reliability.

Partner with Sukra Infotek to build agentic AI capabilities into your healthcare ecosystem.



workwithus@sukrainfotek.com

+91 86800 06293

+91 95000 90898