

Agentic AI Solutions

Transforming Industries through Intelligent Automation and Decision Support

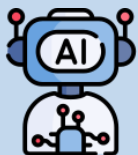
Empowering Healthcare, Legal, Engineering, Operations, and Semiconductor Industries with Cognitive AI Workflows

At **Sukra Infotek**, we bring the power of **Agentic Artificial Intelligence (AI)** to accelerate digital transformation across industries. Our Agentic AI solutions combine automation, reasoning, and human collaboration to optimize workflows, enhance decision-making, and deliver measurable business outcomes.

By integrating AI-driven agents into existing processes, we help organizations operate smarter, faster, and more securely — from engineering and operations to healthcare, legal, and semiconductor ecosystems.

From content generation to autonomous enterprise intelligence

Agentic AI



- Plans tasks across systems
- Executes workflows end to end

Vs

Cognitive AI



- Understands documents, context, rules
- Extracts structured insights

Vs

Generative AI



- Takes actions, not just answers

Agentic AI = Generative AI + Cognitive Intelligence + Autonomous Actions

Our Core Competence



Agentic Workflow Orchestration

Multi-agent systems that automate document understanding, data analysis, and task execution across departments.



Domain-Aware Intelligence

AI frameworks fine-tuned for healthcare, legal compliance, engineering operations, and semiconductor workflows.



Human-in-the-Loop Design

Retaining decision control while automating high-volume or repetitive cognitive tasks for safety and accountability.



Integrated Platform Delivery

Secure, scalable, and explainable AI architectures deployed on cloud or on-premise environments.



AI + Engineering Fusion

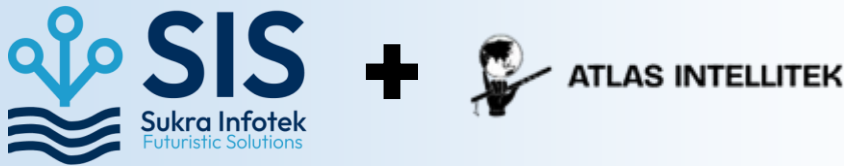
Combining physical simulations, process intelligence, and data-driven insights to enable predictive and prescriptive operations.

Application Areas

Healthcare	AI-driven clinical documentation, workflow optimization, and decision support systems for oncology and hospital operations.
Legal	Intelligent contract review, compliance tracking, and document summarization using language models with built-in explainability.
Engineering & Manufacturing	Agentic systems for design automation, predictive maintenance, and digital twin validation through AI + CFD integration.
Operations & Maintenance	Proactive monitoring, anomaly detection, and resource scheduling agents improving uptime and asset reliability.
Semiconductor Industry	Cognitive automation in process analytics, data validation, and equipment performance intelligence.

Innovation & R&D – Agenetic AI

Jointly powered by



Our innovation roadmap includes:

→ **Surrogate AI for Complex Business & Technical Workflows**

AI models that replace long decision cycles—financial modelling, engineering calculations, document analysis—with instant, high-accuracy predictions.

→ **Agentic AI for Autonomous Decision-Making**

Intelligent agents that plan, analyze, coordinate, and execute multi-step tasks across HR, finance, operations, legal, healthcare, customer service, and engineering.

→ **Predictive Intelligence for People, Processes & Systems**

AI that anticipates failures, escalations, risks, and opportunities—across assets, compliance, customer operations, supply chain, and organizational health.

→ **Digital Twin Integration for Real-Time Optimization**

AI agents connected to ERP, CRM, IoT, BMS, or internal data streams—continuously simulating outcomes and optimizing decisions in real time.

→ **Cognitive Supply Chain & Autonomous Operations**

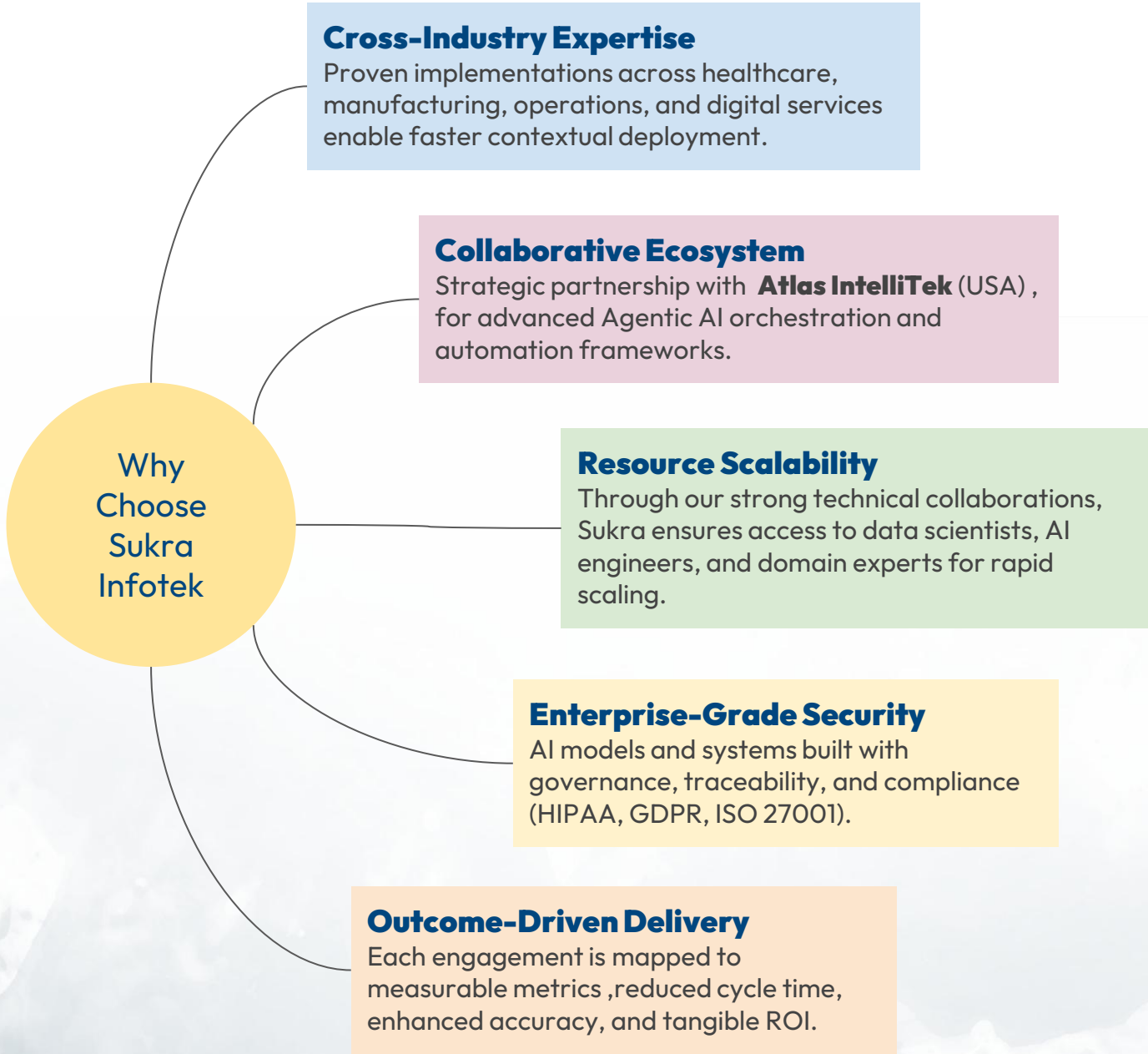
AI that monitors demand, vendor SLAs, logistics, inventory, and cost flows—automating insights, negotiations, and proactive risk management.

What powers our roadmap

- | | |
|--|---|
| <ul style="list-style-type: none">• Multi-agent orchestration for enterprise processes• AI-driven automation of repetitive cognitive tasks• Real-time optimization and decision agents | <ul style="list-style-type: none">• Domain-aware intelligence trained on enterprise data• Self-learning operational policies and digital twins• Secure, compliant, scalable AI infrastructure |
|--|---|

Why this matters for the enterprise

Shrinks operational cycle time by 40–70%	Improves accuracy, compliance, and audit readiness	Reduces workload on teams by automating cognitive tasks	Unified decision intelligence across departments	Readiness for autonomous, scalable, AI-first operations
---	---	--	---	--



The Sukra Advantage

End-to-End Enablement	From pilot projects to full-scale deployment, Sukra supports every phase of AI adoption with domain expertise and delivery assurance.
Scalable AI Infrastructure	Modular architecture enabling hybrid cloud/on-premise implementations suited to enterprise environments.
Proven Technical Backbone	Multidisciplinary teams spanning data engineering, software development, computational modeling, and cybersecurity.
Rapid Proof-of-Value	Short 4–6-week engagement cycles that demonstrate tangible outcomes before large-scale rollouts.
Startup Agility, Enterprise Reliability	As a nimble company with strategic collaborations, Sukra combines innovation speed with dependable governance.

Partner with Sukra to build the next generation of AI-powered systems that think, learn, and act with purpose.



workwithus@sukrainfotek.com

+91 86800 06293

+91 95000 90898

Reach us to explore how Agentic AI can accelerate your enterprise transformation.